



Hydraulic load sensing and control devices (for installation on top of the hydraulic tank)

In order to direct the oil flow from the hydraulic pump to the equipment to be driven, load sensing and control devices, which are built up in modular construction segments, are used. These ensure the correct speed and sense of rotation of the equipment to be driven. Supplied as standard for 24 Volt electric installations, 12 Volt on request.

Single step load sensing device (24 Volt). Gives zero or full flow rate, depending on whether a load is sensed or not. Used for e.g. bow and stern thrusters.

HT 1011



Solenoid control unit (24 Volt) for bow and stern thrusters.

HT 1013



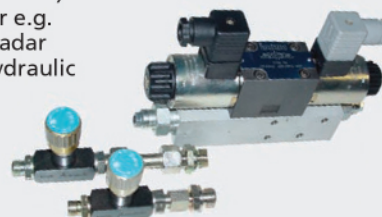
Dual step load sensing device (24 Volt). Gives zero, partial or full flow rate, dependant on load sensed. Used for e.g. bow and stern thrusters.

HT 1012



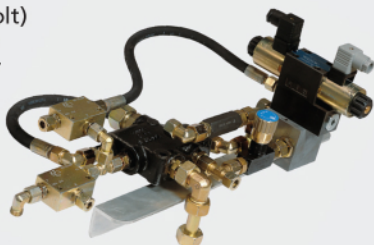
Solenoid control unit (24 Volt) with counterbalance, for e.g. mast lowering, hinged radar support (or any other hydraulic cylinder for numerous applications).

HT 1014



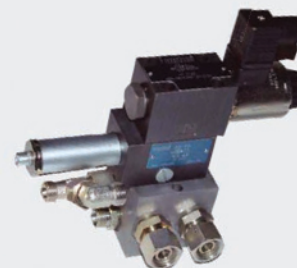
Solenoid control unit (24 Volt) for use with a hydraulically powered steering system or an automatic pilot.

HT 1019



Solenoid control unit (24 Volt) for use with a set of stabilisers.

HT 1024

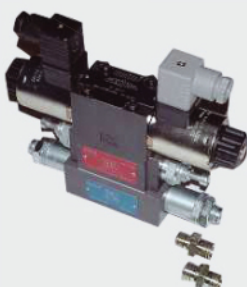


HT 102311

Single step solenoid control unit (24 Volt) for use with anchor windlasses.

HT 102312

Dual step solenoid control unit (24 Volt) for use with anchor windlasses.



An extension of the basic block necessary if more than 5 solenoid control devices are required.

HT 1026



Hydraulic Hose

Hose for hydraulic drives, complete with connector nipples fitted. This type of hose is available in various lengths and diameters to order.

HH



Oil

We recommend the use of the following hydraulic fluids: VETUS Hydraulic oil HT (HLP ISO-VG46).



VHT1

VHT4

VHT20